

WASTE TO ENERGY PLANT FOR HEAT PRODUCTION IN PARMA

CATEGORY

Energy efficiency (Cogeneration Facilities)

LOCATION



DESCRIPTION

The waste-to-energy plant (WTE) for municipal and special solid waste in Parma was built between 2009 and 2013, the year in which it entered service.

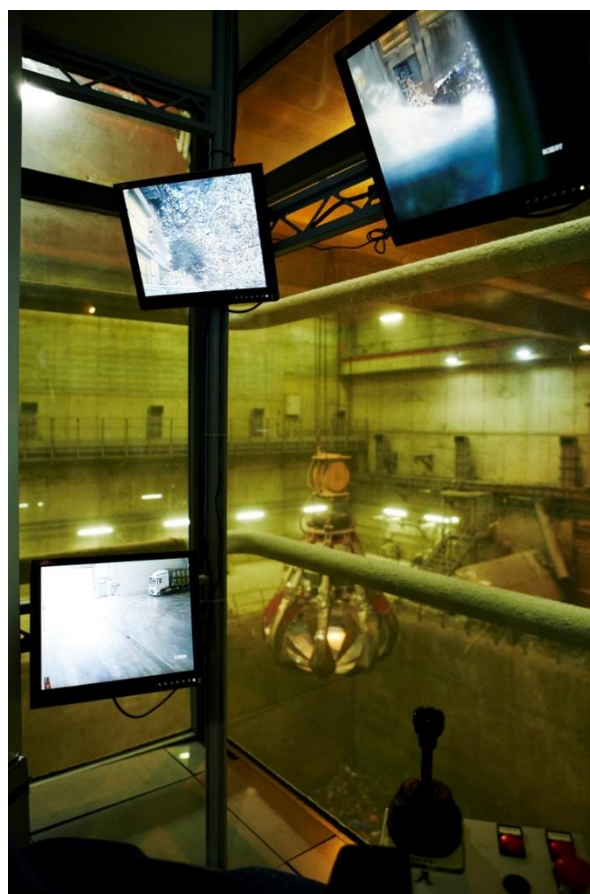
The site, called PAI, located in the Municipality of Parma also provides for the construction of other waste treatment plants, including an urban waste pre-treatment plant.

The waste-to-energy plant, made up of two 35.7 MW combustion lines, can supply a nominal electric power of 22.25 MW and a thermal power of 43.5 MW.

The thermal energy produced is transferred to the city district heating network, to which the plant is directly connected.

AMOUNT

Full project amount (€ millions)	Financeable amount (€ millions)	Financed amount (€ millions)
216.5	216.5	4.4 (GB3) 212.1 (GB1)



ENVIRONMENTAL PERFORMANCE INDICATORS

KPI	Unit of measure	2006/ 2007	2008	2009	2010	2011	2012	2013	2014	2015	2016	2017	2018	2019	2020	2021	2022
PES Primary Energy Saving Indicator per operating year	%									11	17	17	13	26	13	13	13
Renewable energy share in percent on total	%									27	49	50	49	49	49	49	49
Thermal energy recovered from waste to Parma DH network in MWh per operating year	GWh									103	130	196	196	194	132	132	132