

## 11. MINI HYDRO FORNACE PLANT IN BAISO (RE)

### CATEGORY

Renewable energy (Mini Hydro Power)

### LOCATION



### DESCRIPTION

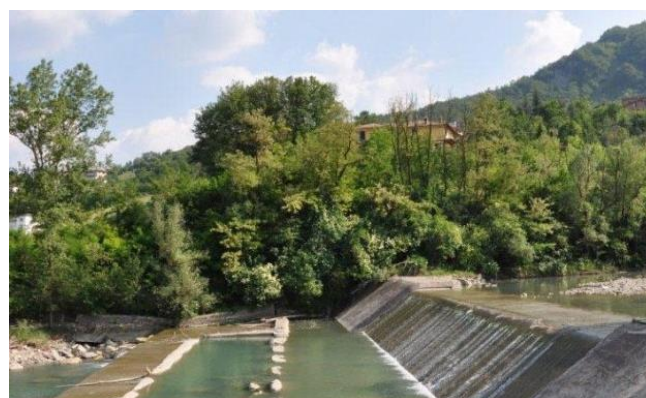
The La Fornace mini hydroelectric plant was built on the Secchia river, along the stretch that lies within the municipality of Baiso, in the province of Reggio Emilia.

It is a run-of-the-river plant, built with particular attention to the minimisation of its environmental impact, in terms of altering the landscape profile and in interacting with the micro ecosystem of the underlying river.

Plant power (kW): 990.

### AMOUNT

Full project amount (2008-2019) (€ millions)	Financeable amount (€ millions)	Financed amount (€ millions)
7.4	7.4	2008-2018: 3.8 mln 2019: - mln
		Total 3.8 mln



### ENVIRONMENTAL PERFORMANCE INDICATORS

KPI	UM	2012	2013	2014	2015	2016	2017	2018	2019	2020	2021	2022
Net produced electricity from renewable non-fossil sources per operating year	kWh	7,118,000	8,415,080	8,428,502	6,956,287	6,879,252	4,814,847	7,559,000	7,400,000	7,400,000	7,400,000	7,400,000
Avoided CO <sub>2</sub> emissions from fossil sources per operating year	t	3,505	4,270	4,357	3,675	3,525	2,368	3,634	3,639	3,639	3,639	3,639