

# 1. WASTE TO ENERGY PLANT FOR HEAT PRODUCTION IN PARMA

## CATEGORY

Energy efficiency (Cogeneration Facilities)

## LOCATION



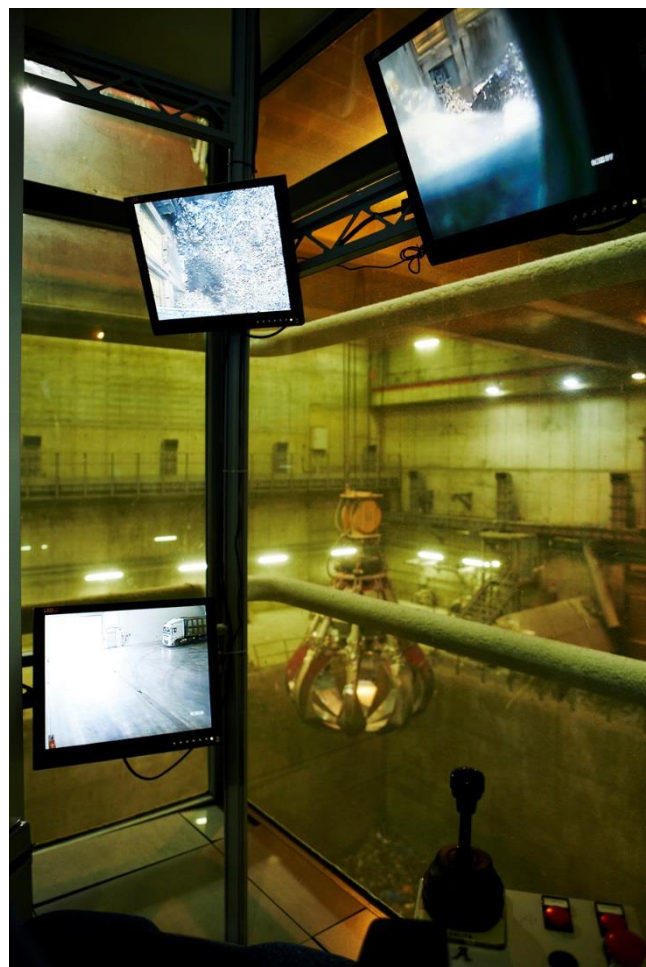
## DESCRIPTION

The waste-to-energy plant (WTE) for municipal and special solid waste in Parma was built between 2009 and 2013, the year in which it entered service.

The site, called PAI, located in the Municipality of Parma also provides for the construction of other waste treatment plants, including an urban waste pre-treatment plant.

The waste-to-energy plant, made up of two 35.7 MW combustion lines, can supply a nominal electric power of 22.25 MW and a thermal power of 43.5 MW.

The thermal energy produced is transferred to the city district heating network, to which the plant is directly connected.



## AMOUNT

Full project amount at 31-12-2017 (€ millions)	Financeable amount (€ millions)	Financed amount (€ millions)
212.1	212.1	212.1

## ENVIRONMENTAL PERFORMANCE INDICATORS

KPI	Unit of measure	2015	2016	2017	2018	2019
PES Primary Energy Saving per operating year	%	11	17	17,0	13,4	17
Renewable energy share in percent on total	%	27	49	49,8	49,2	49
Thermal energy recovered from waste to Parma DH network per operating year	GWh	103	130	195.9	196.1	151